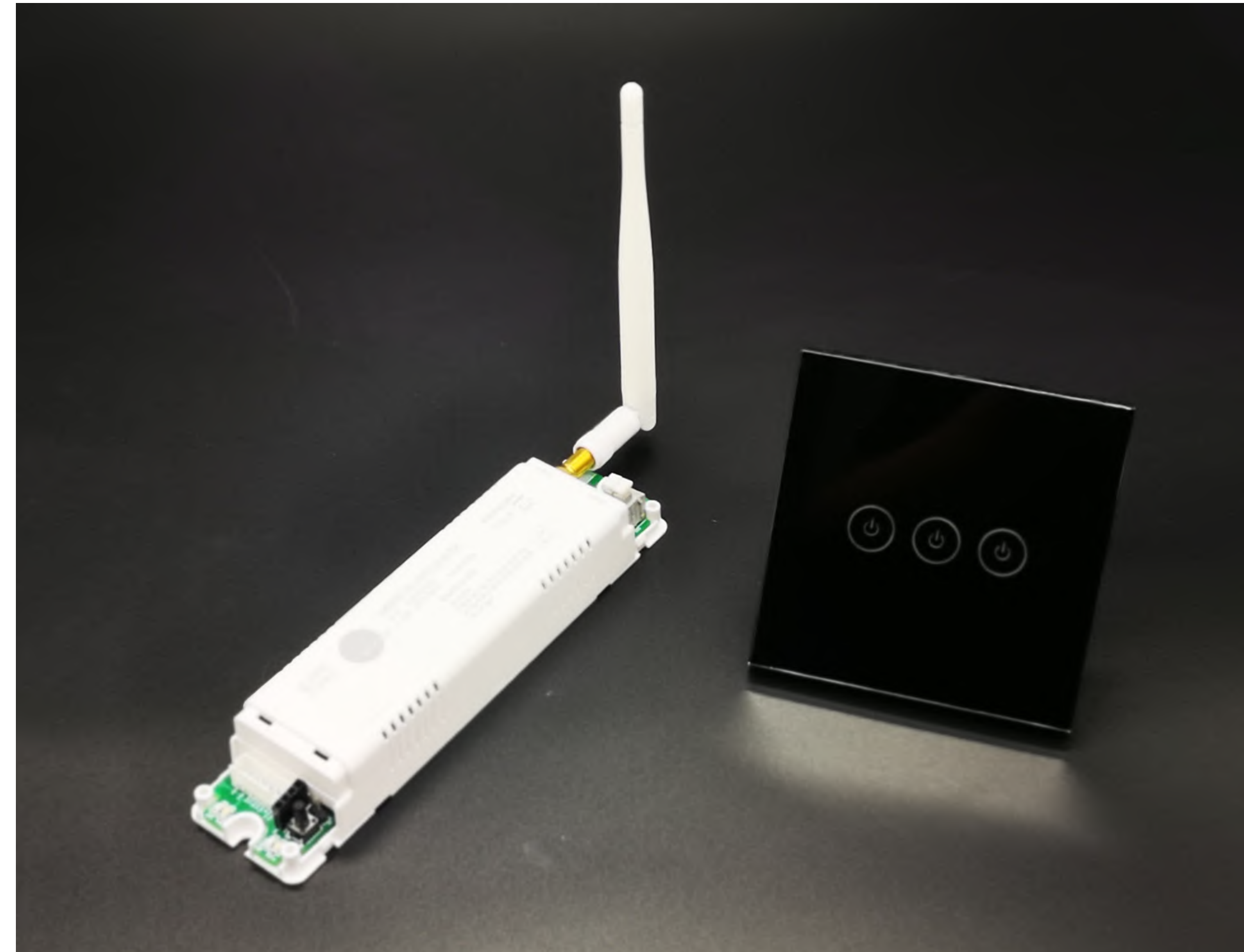


Wireless Touch Switch

MA-LW

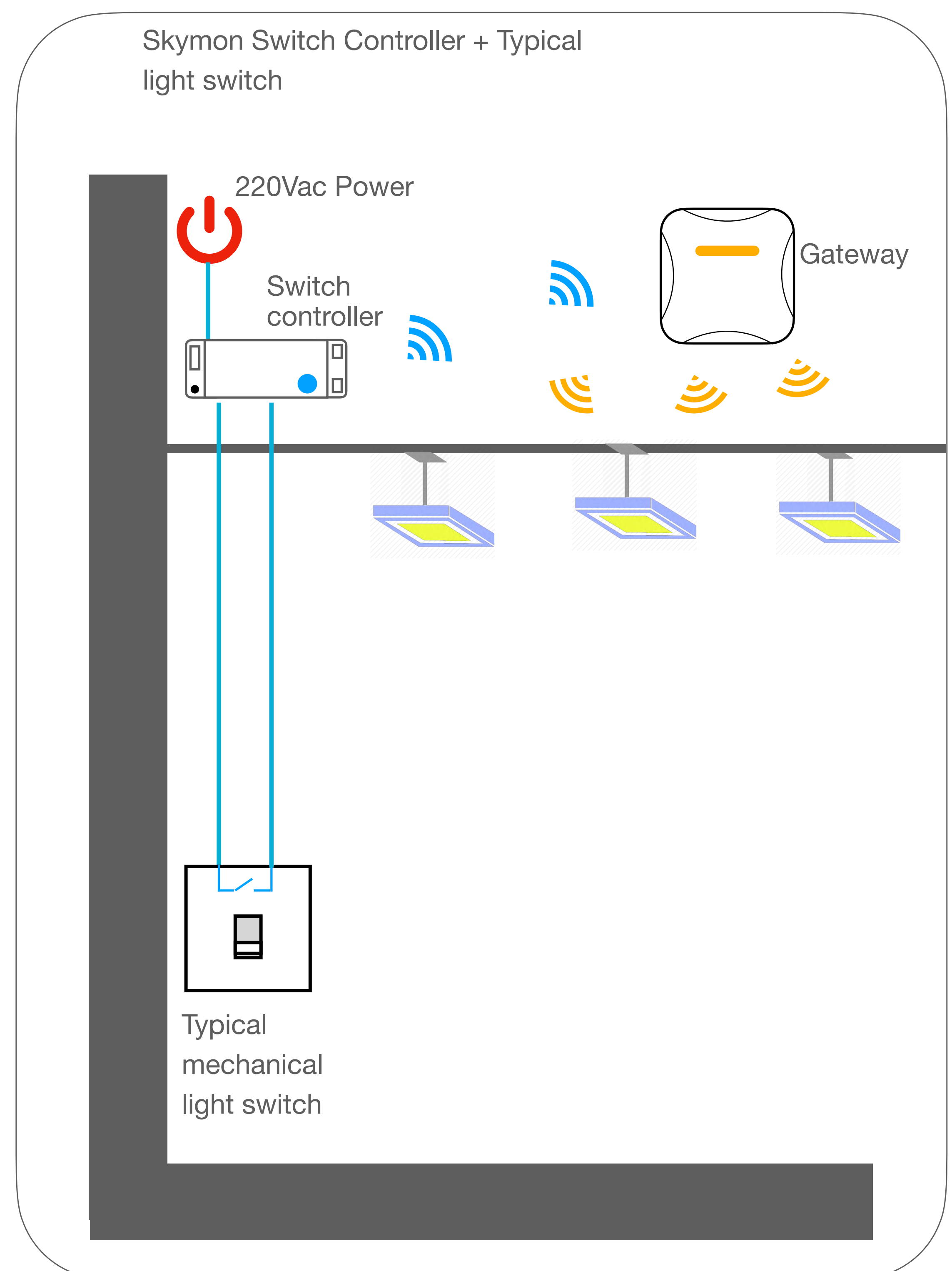
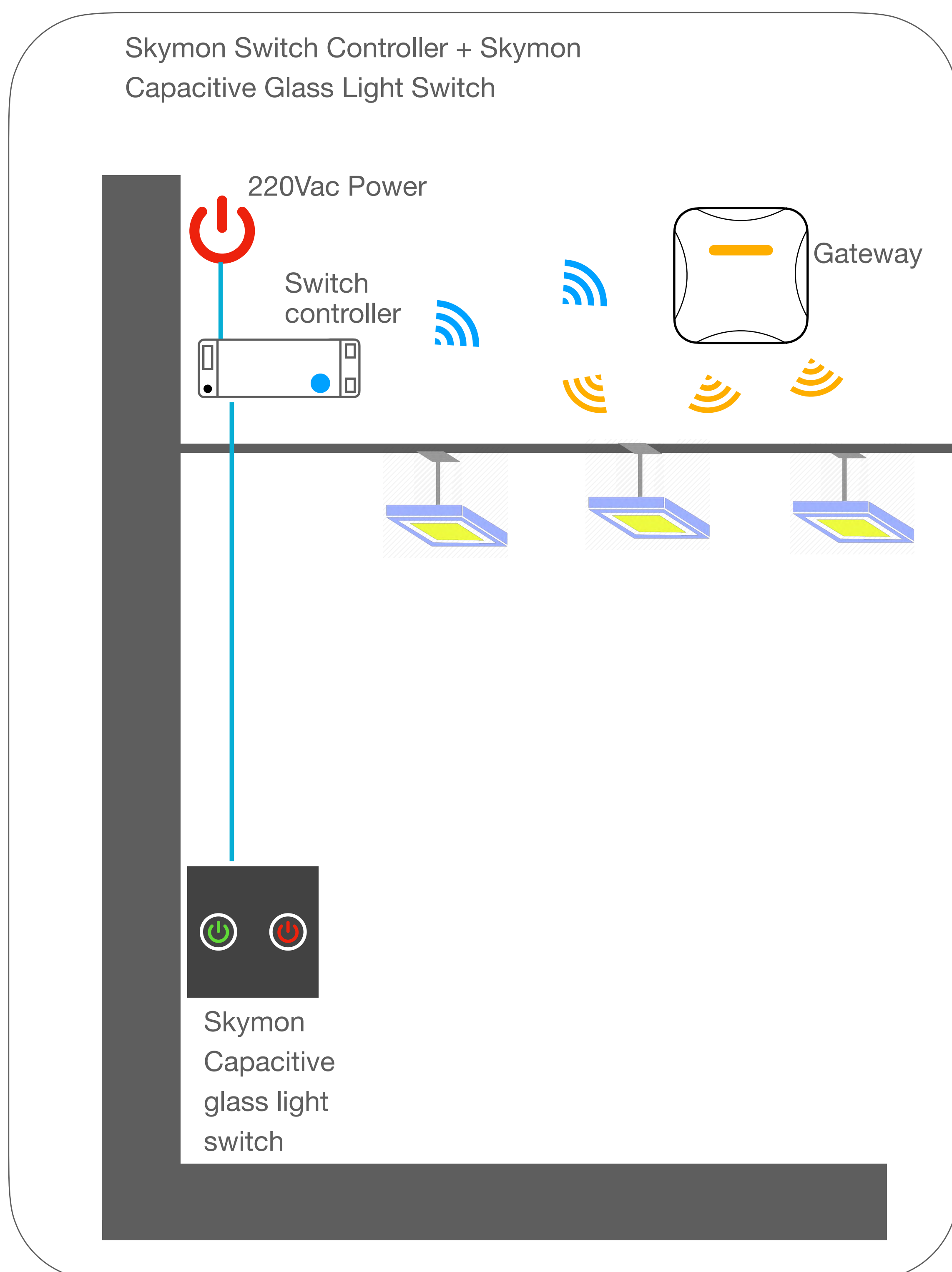
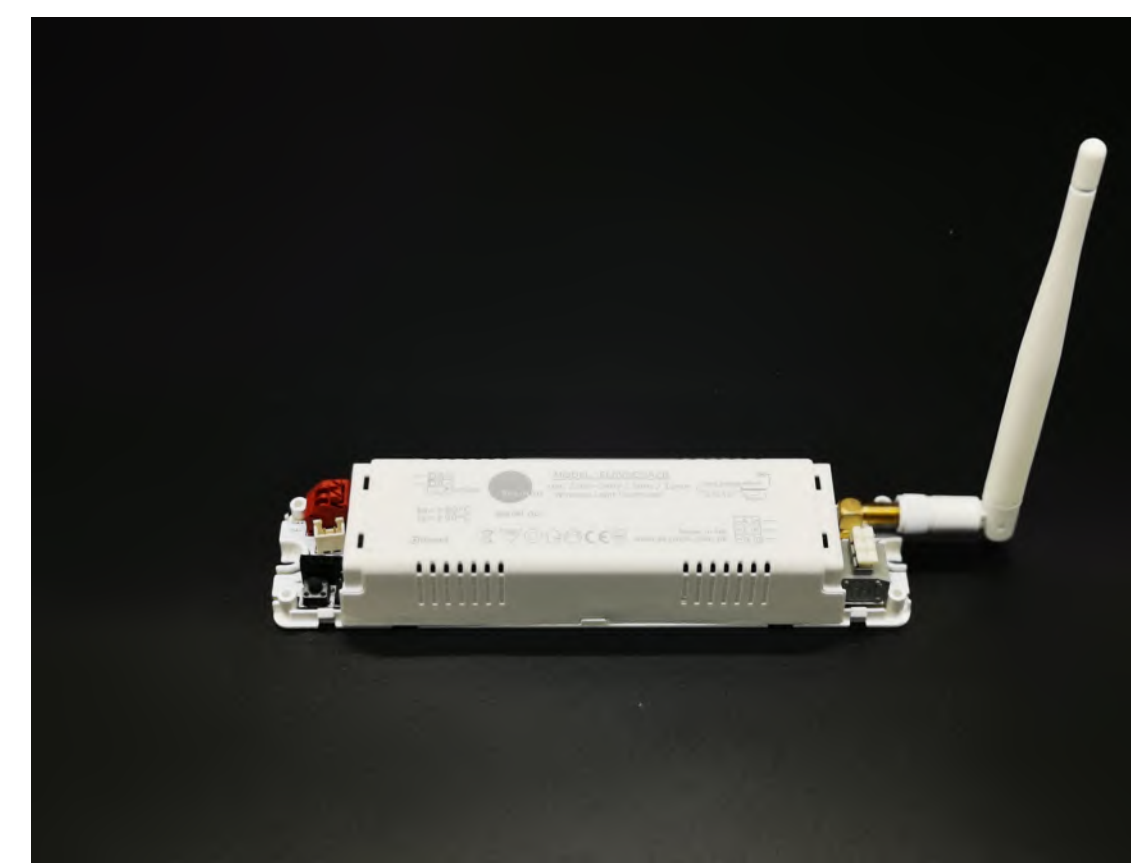
Features:

- Split type design
- Capacitive touch glass panel
- Work with Skymon IOT system to control wireless light controllers
- IEEE802.15.4 wireless mesh network
- AC220V supply
- Online set up links with light controllers
- Online set up control priority of touch switch control and motion sensor control
- Split design, easy install
- Control unlimited lights via server user interface
- Lights can be controlled by different sensors
- Made in Hong Kong



Switch Controller

Glass panel touch switch



Wireless Touch Switch

MA-LW

Specifications:

Model number	MA-LW-3P-ZB	MA-LW-3P-ZB-X
Switch Controller	•	•
Switch panel type	Suit 86-type capacitive touch glass switch	Not included
Glass panel colour	Dark brown / white	Not included
No. of gang	Max. 3 gang	Not included
Switch operation	Latching (optional Momentary)	
Input AC power	220V 50Hz	
Controller LED indication	System , switch status	
Communication	IEEE 802.15.4 2.4-2.45GHz self-form mesh network	
Transmitter range	15m	
Controller size (L x W x H)	160x38x25	
Touch switch size (L x W x H)	110x110x33	
Operating temperature	-20 - 50°C	
Enclosure	ABS, IP20	

Dimensions:

